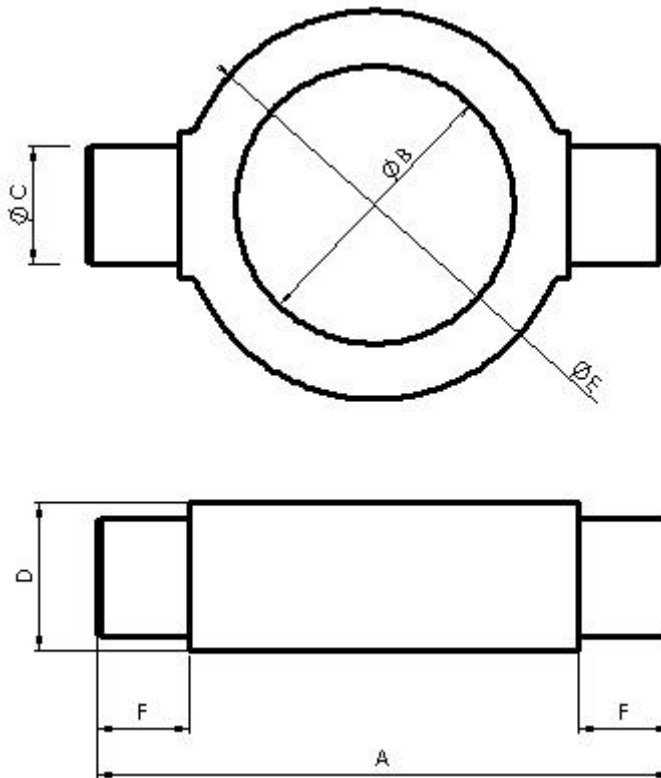


BRIDA de MUÑONES

LÁSER

TRUNNION

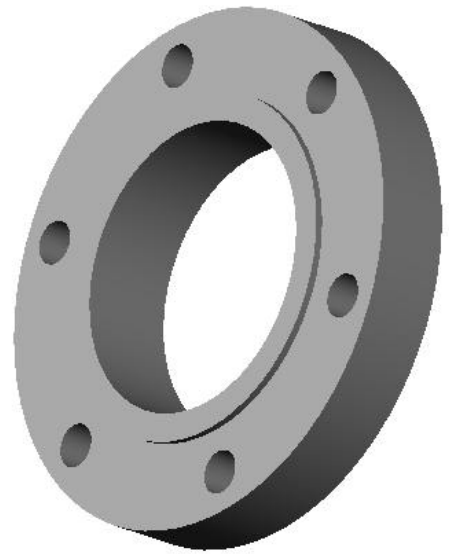
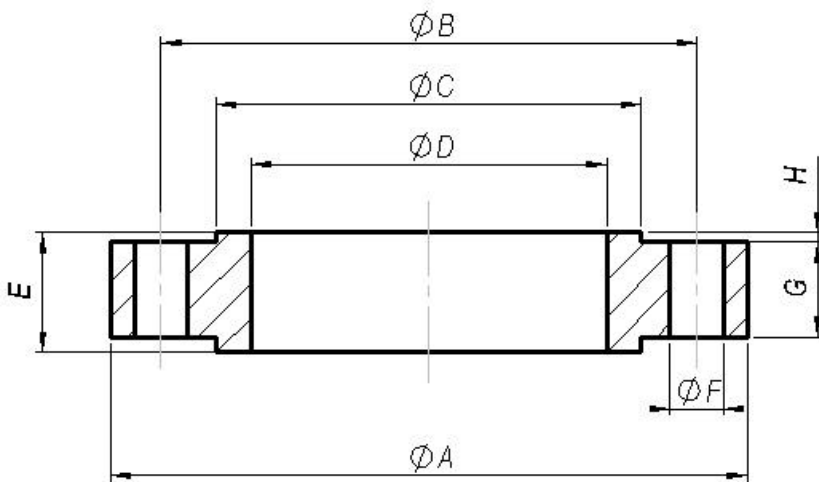
LASER



REFERENCIA	A	B	Tol.B	C	D	E	F	kg/pieza
BM32L	80	42	+0,25 +0,20	16	20	56	12	0,23
BM40L	102	50		20	24	70	16	0,45
BM50L	125	60		25	30	85	20	0,86
BM60L	150	70		30	35	100	25	1,37
BM63L	155	75		32	40	105	25	1,71
BM70L	165	80		32	40	115	25	2,05
BM80L	175	95		32	40	125	25	2,18
BM100L	220	115		40	45	156	32	3,77
BM125L	270	145		50	55	190	40	6,35
BM140L	320	160		55	65	220	50	11,04
BM160L	350	180						

BRIDA DELANTERA Y TRASERA

FRONT & REAR BRIDLE



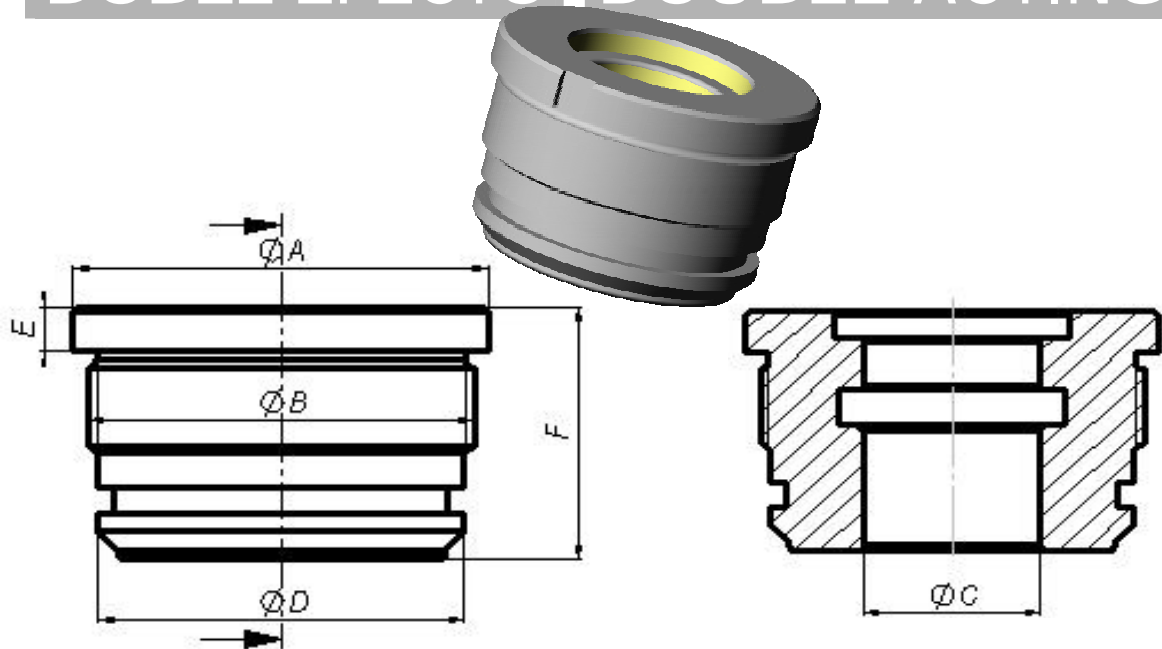
REFERENCIA	A	B	C	D	E	F	G	H	kg/pieza	Montaje cil.
B804019N6T7	80	67	52	40	19	7	15	2	0,44	8000
B1004822N6T9	100	82	60	48	22	9	15	2	0,72	8001 / 8003
B1255825N6T11	125	103	75	58	25	11	18	2	1,38	8004 / 8007
B1456827N6T13	145	120	90	68	27	13	20	2	2,05	8008 / 8010
B1457327N6T13	145	120	90	73	27	13	20	2	1,93	8011 / 8013
B1607831N6T15	160	130	100	78	31	15	24	2	2,86	8014 / 8016
B1709335N6T15	170	142	110	93	35	15	28	2	3,61	8017 / 8021
B20211338N6T17	202	170	135	113	38	17	30	3	5,13	8022 / 8026
B250M14550N6T21	250	210	170	M145x2	50	21	40	3	10,24	8027 / 8028
B280M15950N6T21	280	230	200	M159x2	50	21	40	3	13,55	8029
B320M17867N6T29	320	270	215	M178x2	67	29	54	3	23,32	8030 / 8031
B385M22880N6T32	385	330	270	M228x2	80	32	65	3	38,49	8032

CABEZAS

GUIDE-BUSHINGS

DOBLE EFECTO

DOUBLE ACTING



Material F-1140 (DIN C45) Nitrurado Antigripante (*nitride hardening*)

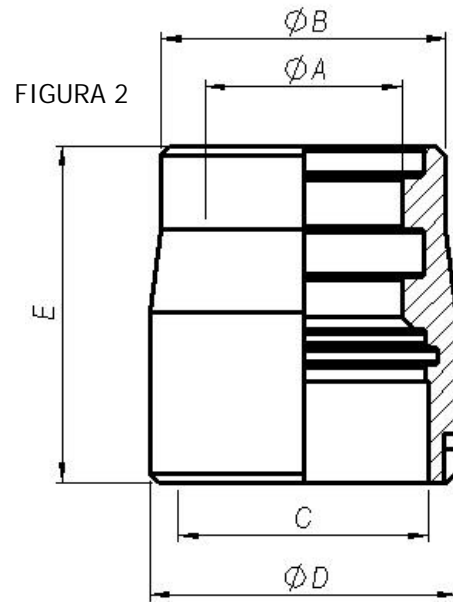
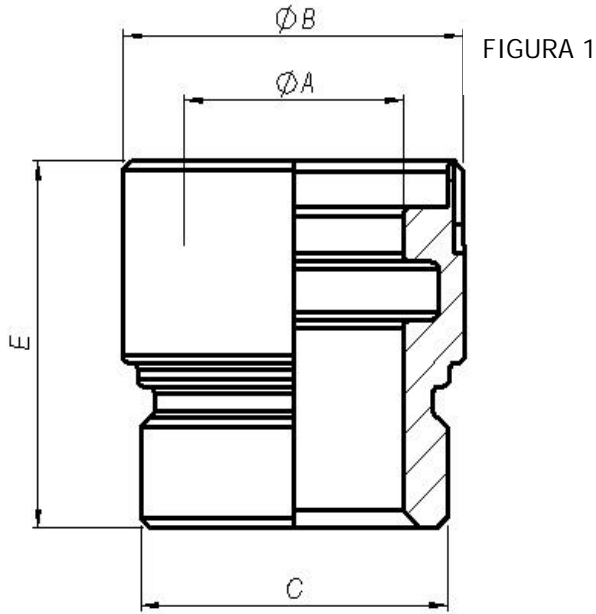
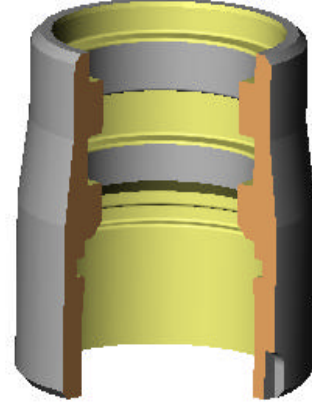
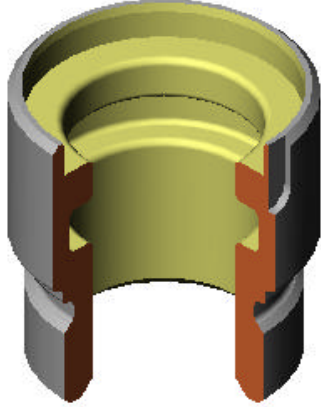
REFERENCIA	A	B	C	D	E	F	kg/pieza
*CDE1632	40	M37x1,5	16	32	8	33	0,19
*CDE2032	40	M37x1,5	20	32	8	33	0,14
*CDE2040N	50	M45x2	20	41,5	7	40	0,32
*CDE2240N	50	M45x2	22	41,5	7	40	0,29
*CDE2540N	50	M45x2	25	41,5	7	40	0,25
*CDE2840N	50	M45x2	28	41,5	7	40	0,21
CDE2050N	60	M55x2	20	51,5	8	43	0,62
*CDE2550N	60	M55x2	25	51,5	8	43	0,52
*CDE2850N	60	M55x2	28	51,5	8	43	0,50
CDE3050N	60	M55x2	30	51,5	8	43	0,44
CDE3550N	60	M55x2	35	51,5	8	43	0,34
*CDE3650N	60	M55x2	36	51,5	8	43	0,35
CDE2560N	70	M65x2	25	61,5	8	45	0,88
CDE3060N	70	M65x2	30	61,5	8	45	0,80
CDE3560N	70	M65x2	35	61,5	8	45	0,69
CDE4060N	70	M65x2	40	61,5	8	45	0,55
*CDE2863N	75	M70x2	28	64,5	8	45	1,00
*CDE3663N	75	M70x2	36	64,5	8	45	0,84
*CDE4060N	75	M70x2	40	64,5	8	45	0,72
*CDE4563N	75	M70x2	45	64,5	8	45	0,59
CDE3570N	80	M75x2	35	71,5	10	49	1,17
CDE4070N	80	M75x2	40	71,5	10	49	1,01
CDE4570N	80	M75x2	45	71,5	10	49	0,88
CDE5070N	80	M75x2	50	71,5	10	49	0,69
CDE3580N	90	M85x2	35	81,5	10	54	1,81

CABEZAS

SIMPLE EFECTO

GUIDE-BUSHINGS

SINGLE ACTING



Material F-1140 (DIN C45) Nitruado Antigripante (*nitride hardening*)

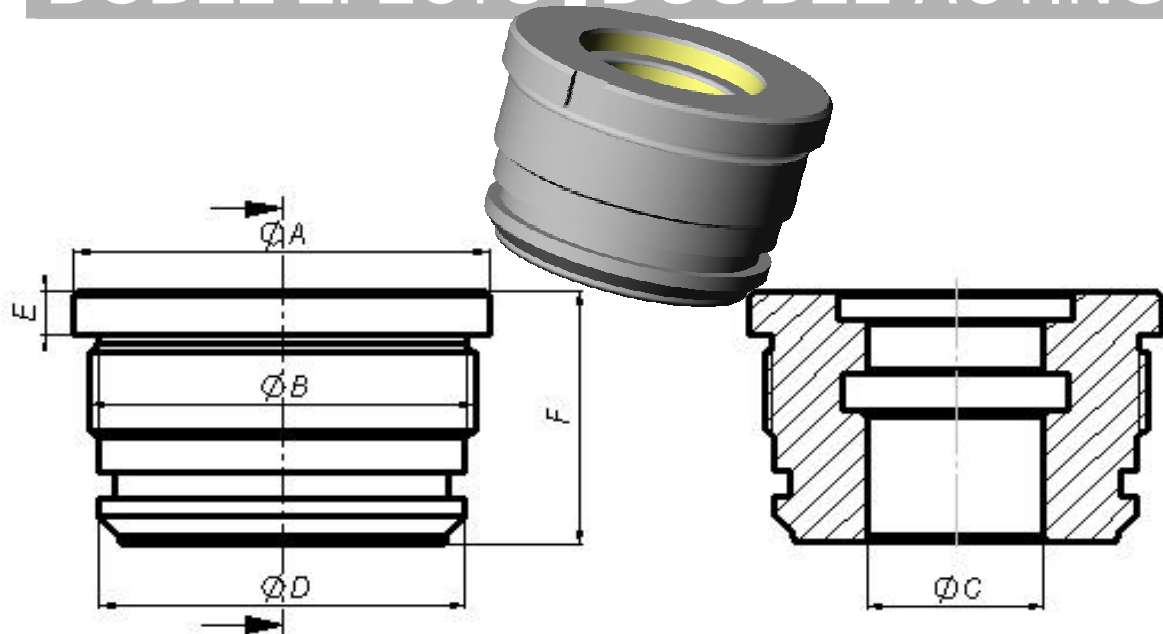
REFERENCIA	A	B	C	D	E	FIGURA	kg/pieza	Montaje cil.
CSE25CH	25	40	M35x1,5		40	1	0,15	625
CSE30CH	30	50	M42x1,5		46	1	0,27	630
CSE35CH	35	55	M48x1,5		65	1	0,48	635
CSE40CH	40	60	M53x1,5		65	1	0,5	640
CSE45CH	45	65	M59x2	70	77	2	0,79	645
CSE50CH	50	70	M64x2	75	80	2	0,91	650
CSE55CH	55	75	M69x2	85	95	2	1,42	655
CSE60CH	60	80	M74x2	90	95	2	1,55	660
CSE70CH	70	98	M89x2	108	110	2	2,93	670

CABEZAS

GUIDE-BUSHINGS

DOBLE EFECTO

DOUBLE ACTING



Material F-1140 (DIN C45) Nitrurado Antigripante (*nitride hardening*)

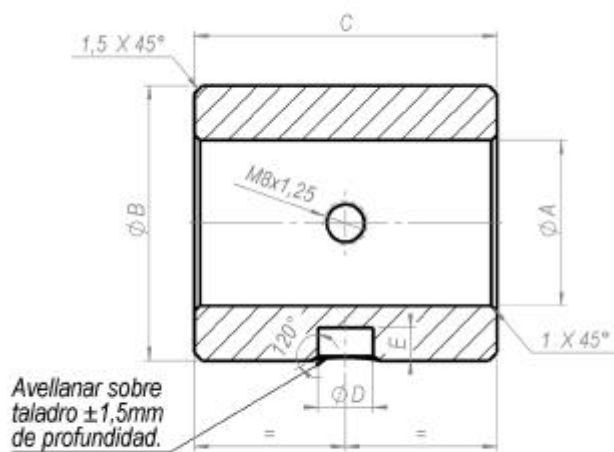
REFERENCIA	A	B	C	D	E	F	kg/pieza
*CDE3680N	90	M85x2	36	81,5	10	54	1,84
*CDE4080N	90	M85x2	40	81,5	10	54	1,65
*CDE4580N	90	M85x2	45	81,5	10	54	1,49
*CDE5080N	90	M85x2	50	81,5	10	54	1,33
CDE5580N	90	M85x2	55	81,5	10	54	1,12
*CDE5680N	90	M85x2	56	81,5	10	54	1,08
CDE6080N	90	M85x2	60	81,5	10	54	0,93
CDE4090N	100	M95x2	40	91,5	10	60	2,50
CDE4590N	100	M95x2	45	91,5	10	60	2,33
CDE5090N	100	M95x2	50	91,5	10	60	2,14
CDE5590N	100	M95x2	55	91,5	10	60	1,94
CDE6090N	100	M95x2	60	91,5	10	60	1,72
*CDE45100N	110	M105x2	45	101,5	10	60	3,06
*CDE50100N	110	M105x2	50	101,5	10	60	2,87
CDE55100N	110	M105x2	55	101,5	10	60	2,65
*CDE56100N	110	M105x2	56	101,5	10	60	2,61
CDE60100N	110	M105x2	60	101,5	10	60	2,43
*CDE70100N	110	M105x2	70	101,5	10	60	1,92
CDE70120	134	M125x2	70	119,6	15	80	4,90
*CDE70125	139	M130x2	70	124,6	15	80	5,53
*CDE90125	139	M130x2	90	124,6	15	80	3,83
*CDE80140	155	M145x2	80	140,6	15	90	7,50
*CDE90160	175	M165x2	90	160,6	20	100	11,25
*CDE110160	175	M165x2	110	160,6	20	100	8,95
*CDE110200	225	M208x2	110	200,6	20	110	20,19

CASQUILLO con ENGRASADOR

FF

BUSH with GREASE-NIPPLE

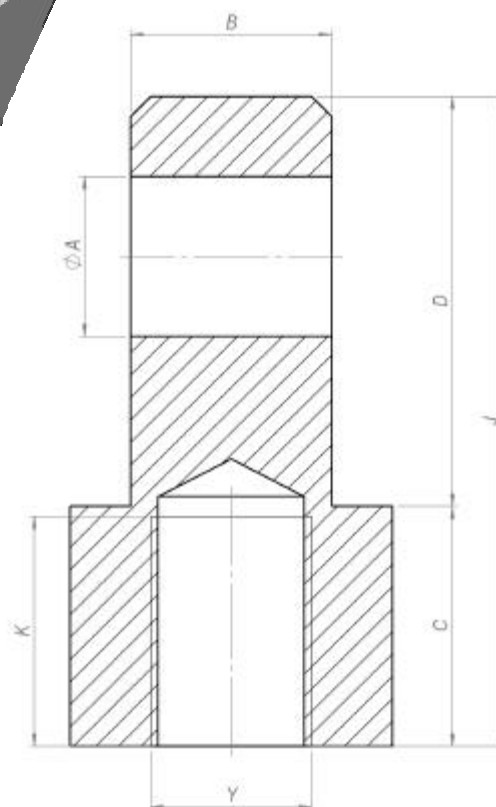
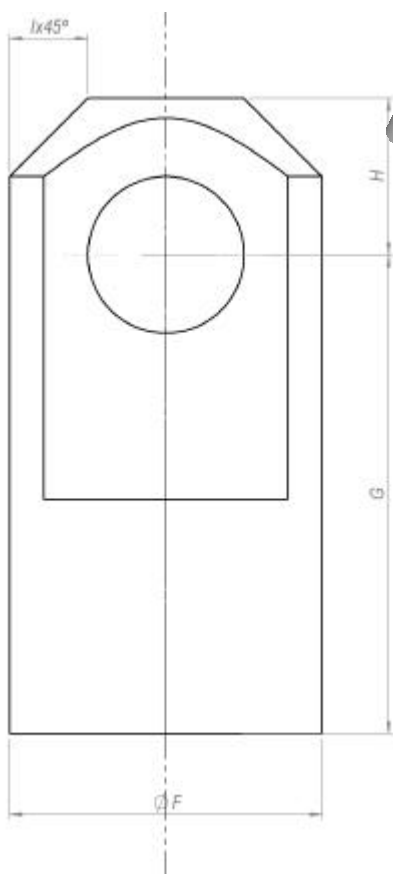
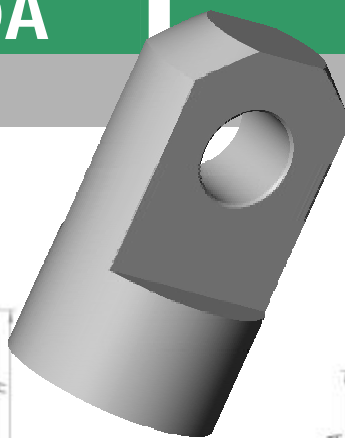
FF



REFERENCIA	ØA	TOL. ØA	ØB	C	TOL. ØC	ØD	TOL. ØD	E	Kg/pza.
CA301635EN	16,2	+0,2	30	35	-0,1	6	+0,1	5	0,14
CA352040EN	20,25		35	40		8		6	0,2
CA402545EN	25,25	0	40	45	-0,3	10	0	6	0,27
CA503055EN	30,5		50	55		10		6	0,53
CA603070EN	30,5		60	70		15		6	1,44
CA804080EN	40,5		80	80		15		6	2,35

CHARNELA MACHO ROSCADA

MALE THREADED HINGE



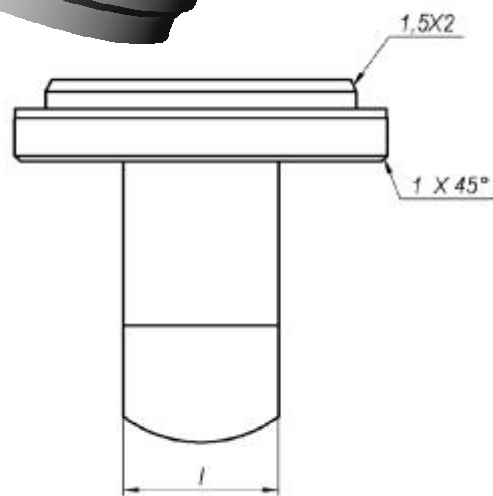
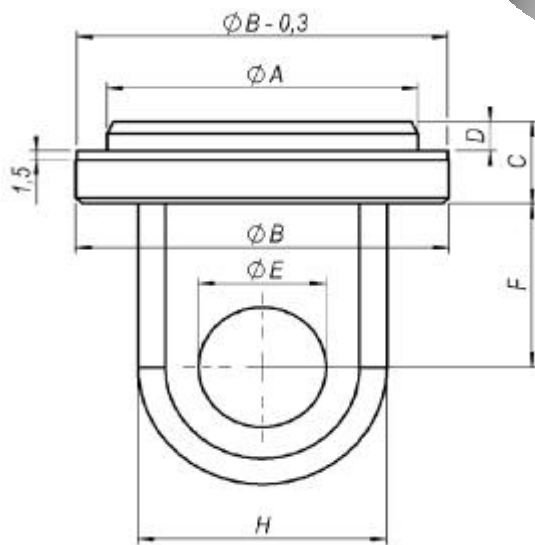
REF.	A	B	C	D	K	F	G	H	I	J	Y	kg/pza.	Mont. cil.
CHM32R	12	16	16	31	19	26	34	13	6,5	47	14x1,5	0,12	8300
CHM40R	16	20	24	41	23	32	49	16	8	65	16x1,5	0,27	8301-8303
CHM50R	20	25	28	48	29	40	56	20	10	76	20x1,5	0,48	8304-8307
CHM63R	25	32	35	57	37	50	67	25	15	92	27x2	0,85	8308-8316
CHM80R	32	40	44	77	46	65	89	32	17	121	33x2	1,88	8317-8321
CHM100R	40	50	54	95	57	80	109	40	20	149	42x2	3,60	8322-8326
CHM125R	50	60	58	115	64	100	123	50	27	173	48x2	6,49	8327-8328
CHM140R	56	70	68	125	65	115	138	55	30	193	64x3	8,74	8329
CHM160R	63	80	75	138	74	126	150	63	35	213	80x3	11,54	8330-8331
CHM200R	80	100	95	175	96	160	190	80	45	270	80x3	25,87	8332

FONDO CHARNELA

LÁSER

BOTTOM HINGE

LASER



REF.	ØA	TOL. ØA	ØB	C	D	ØE	TOL.. ØD	F	H	I	kg/pza.
FCH42L	32	+0,06 +0,04	42	12	5	12,2	+0,2 0	20	26	16	0,181
FCH50L	40	+0,06 +0,04	50	12	5	16,2		25	32	20	0,295
FCH60L	50	+0,06 +0,04	60	14	5	20,5		28	40	25	0,665
FHC70L	60	+0,07 +0,05	70	14	5	25,5		32	50	32	0,840
FCH75L	63	+0,07 +0,05	75	14	5	25,5		32	50	32	0,890
FCH80L	70	+0,06 +0,04	80	16	5	25,5		32	50	32	1,040
FCH95L	80	+0,07 +0,05	95	16	5	32,5		45	64	40	1,825
FCH105L	90	+0,08 +0,06	105	18	5	32,5		45	64	40	2,200
FCH115L	100	+0,08 +0,06	115	18	5	40,5		55	80	50	3,320
FCH145L	125	+0,08 +0,06	145	20	5	50,5					

TAPA

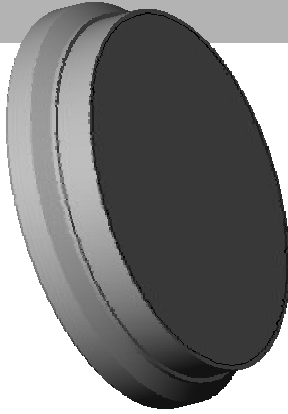
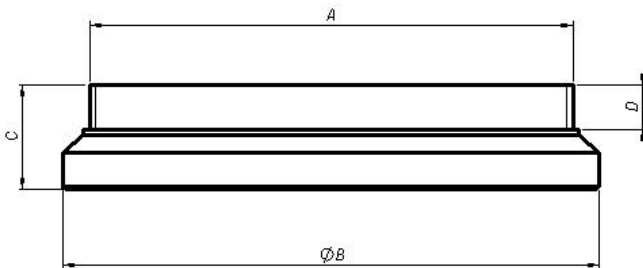


FIGURA 1



PLAIN BOTTOM

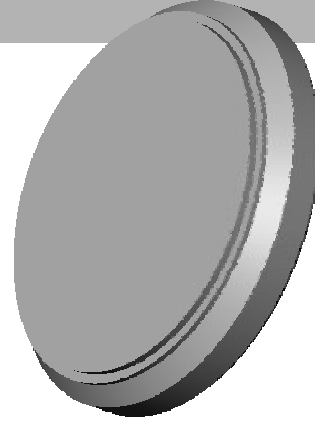


FIGURA 2



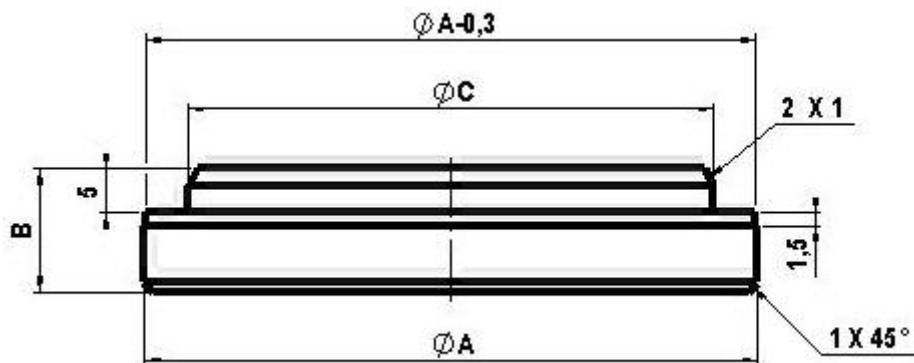
REFERENCIA	A	B	C	D	FIGURA	kg/pieza	Montaje cil.
F4012	32	40	12	2	1	0,12	varios
F4212	32	42	12	2	1	0,13	8000
F4512	39	45	12	2	1	0,15	varios
F5012	40	50	12	2	1	0,18	8001 / 8003
F5514	45	55	14	2	1	0,24	varios
F6014	50	60	14	2	1	0,31	8004 / 8007
F6514	55	65	14	2	1	0,36	varios
F7014	60	70	14	2	1	0,42	8008 / 8010
F7514	63	75	14	2	1	0,49	8011 / 8013
F8016	70	80	16	2	1	0,63	8014 / 8016
F9016	80	90	16	2	1	0,80	varios
F9516	80	95	16	2	1	0,89	8017 / 8021
F10518	90	105	18	2	1	1,22	varios
F11518	100	115	18	2	1	1,47	8022 / 8026
F14020	120	140	20	2	1	2,40	varios
F14520	125	145	20	2	1	2,60	8027 / 8028
F16035	M142x2	160	35	15	2	4,98	8029
F18035	M162x2	180	35	15	2	6,37	8027 / 8030
F23040	M202x2	230	40	18	2	11,64	8027 / 8031

TAPA

LÁSER

PLAIN BOTTOM

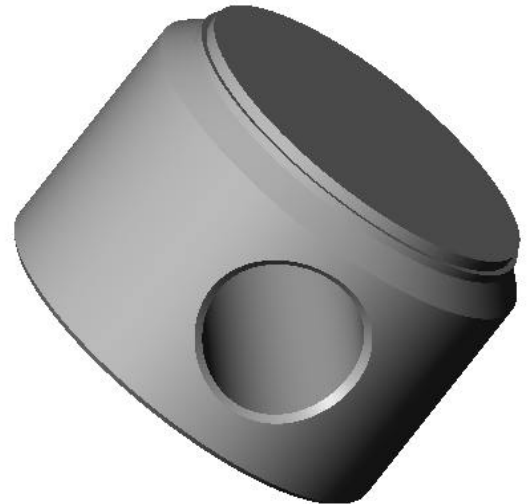
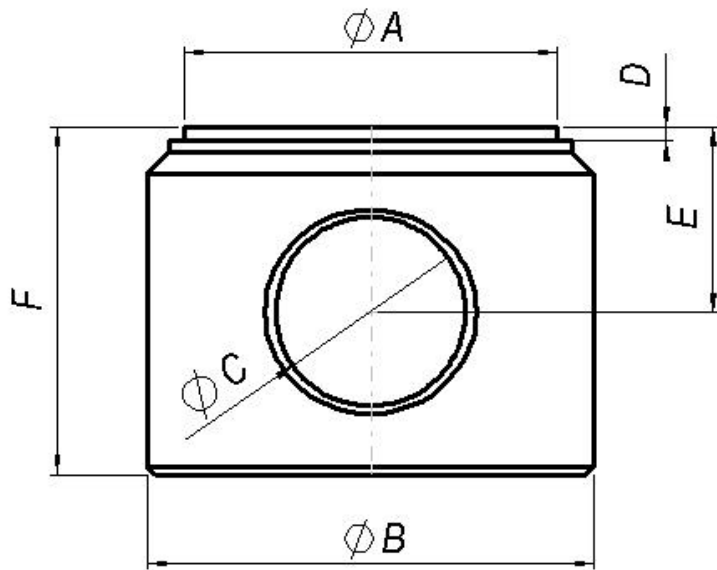
LASER



REFERENCIA	ØA	B	ØC	Kg/pieza
F4012L	40	12	32	0,12
F4212L	42	12	32	0,13
F5012L	50	12	40	0,18
F5514L	55	14	45	0,20
F6014L	60	14	50	0,29
F6514L	65	14	55	0,30
F7014L	70	14	60	0,40
F7514P63L	75	14	63	0,47
F8016L	80	16	70	0,61
F9016L	90	16	80	0,74
F9516L	95	16	80	0,89
F10518L	105	18	90	1,22
F11518L	115	18	100	1,40

FONDO TALADRADO

DRILLED BOTTOM



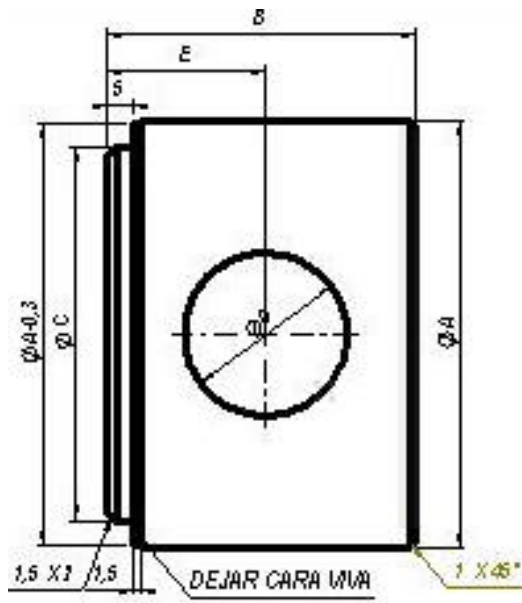
REFERENCIA	A	B	C	D	E	F	kg/pieza	Montaje cil.
F401432	32	40	14,2	2	18	32	0,27	625
F401648	32	40	16,2	2	32	48	0,41	700
F501638	40	50	16,5	2	20,5	38	0,51	630
F502038	40	50	20,5	2	20,5	38	0,46	701
F552047	45	55	20,5	2	25	47	0,68	635
F602347	50	60	23,5	2	25	47	0,85	640 / 645
F602547	50	60	25,5	2	25	47	0,81	702
F652553	55	65	25,5	2	28	53	1,13	650
F702547	60	70	25,5	2	25	47	1,15	655 / 703
F752553	65	75	25,5	2	28	53	1,55	660
F803058	70	80	30,5	2	30	58	1,85	704
F903058	80	90	30,5	2	30	58	2,40	705
F1053060	90	105	30,5	2	30	60	3,50	varios
F1153058	100	115	30,5	2	30	58	4,09	706
F1404085	120	140	40,5	2	45	85	8,82	707

FONDO TALADRADO

LÁSER

DRILLED BOTTOM

LASER



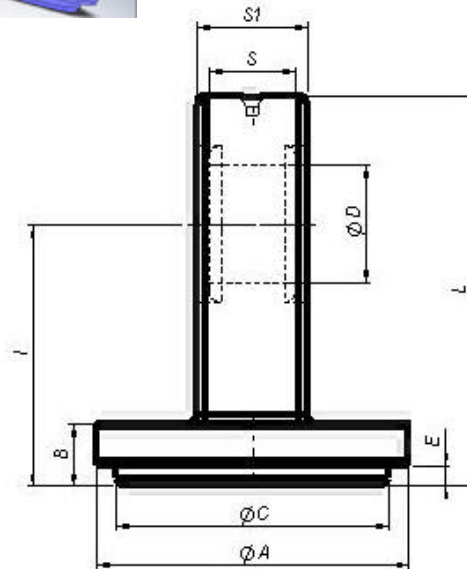
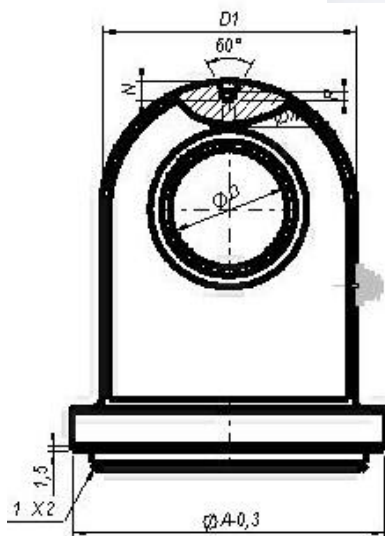
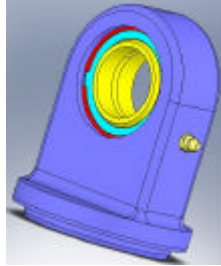
REFERENCIA	ØA	B	ØC	ØD	E	kg/pieza
F401432L	40	32	32	14,2	18	0,27
F401648L	40	48	32	16,2	32	0,41
F501638L	50	38	40	16,25	20,5	0,51
F502038L	50	38	40	20,25	20,5	0,46
F552047L	55	47	45	20,25	25	0,68
F602347L	60	47	50	23,5	25	0,85
F602547L	60	47	50	25,25	25	0,81
F652553L	65	53	55	25,25	28	1,13
F702547L	70	47	60	25,25	25	1,15
F752553L	75	53	65	25,25	28	1,55
F803058L	80	58	70	30,5	30	1,85
F903058L	90	58	80	30,5	30	2,40
F1053058L	105	60	90	30,5	30	3,50
F1153058L	115	58	100	30,5	30	4,09
F1404085L	140	85	120	40,5	45	8,82

FONDO RÓTULA

LÁSER

BALL-JOINTED BOTTOM

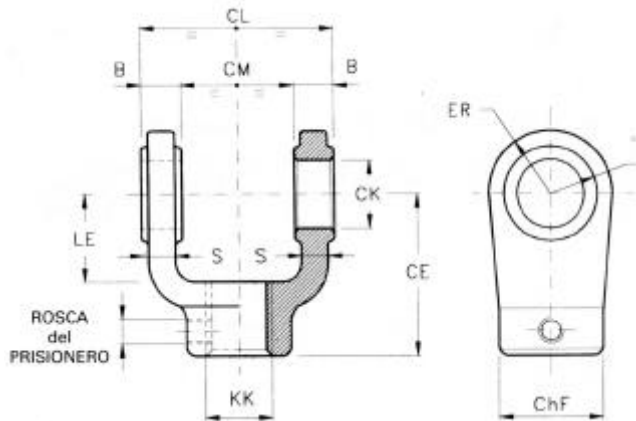
LASER



REF.	ØA	B	ØC	ØD	E	S	I	D1	S1	L	Ø M	N	R	Kg/Pza.
FD2032L	40	12	32	20	5	16	50	47	19	73,5	3	4	2	0,26
FD2040L	50	12	40	20	5	16	50	47	19	73,5	3	5	2,5	0,485
FD2550L	60	14	50	25	5	20	59	55	23	86,5	3	5	2,5	0,765
FD3060L	70	14	60	30	5	22	65	65	28	97,5	3	5	2,5	1,3
FD3063L	75	14	63	30	5	22	65	65	28	97,5	3	5	2,5	1,36
FD3570L	80	16	70	35	5	25	77	75	30	114,5	5	8	4	1,81
FD3580L	90	16	80	35	5	25	77	83	30	118,5	5	8	4	2,24
FD3580/95L	95	16	80	35	5	25	77	83	30	118,5	5	8	4	2,39
FD4090L	105	18	90	40	5	28	87	95	35	134,5	5	8	4	3,7
FD40100L	115	18	100	40	5	28	87	100	35	137	5	8	4	3,88
FD50125L	145	20	125	50	5	35	108	123	40	169,5	5	8	4	7,05
FD60140L	160	35	M142x2	60	15	44	135	140	50	205	5	8	4	12,08
FD70160L	180	35	M162x2	70	15	49	150	164	55	232	5	8	4	17,07
FD80200L	230	40	M202x2	80	18	55	181	180	60	271	5	8	4	26,74

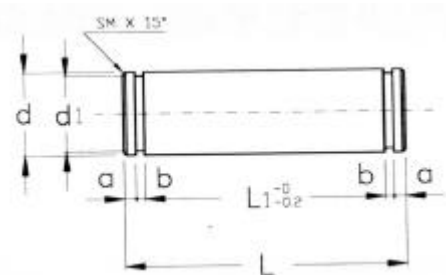
HORQUILLA ROSCADA Y BULÓN

CF



THREADED YOKE & PIN

CF



HORQUILLA REFERENCIA	CM	CK	CE	CL	ChF	KK	LE	ER	B	IR	S	Rosca del Prisionero
CF1310	12	10	32	24	19	M10X1,25	13	12	6	10	5	M5X5
CF1312	16	12	36	32	21	M12X1,25	19	17	8	15	7	M5X5
CF1314	20	14	38	40	21	M14X1,50	19	17	10	15	8	M5X5
CF1316	30	20	54	60	32	M16X1,50	32	29	15	26	13	M6X6
CF1320	30	20	60	60	32	M20X1,50	32	29	15	26	13	M6X6
CF1327	40	28	75	80	40	M27X2	39	34	20	30	17	M6X6
CF1333	50	36	99	100	56	M33X2	54	50	25	46	22	M8X8
CF1342	60	45	113	120	56	M42X2	57	53	30	49	27	M8X8
CF1348	70	56	126	140	75	M48X2	63	59	35	38	31	M8X8
CF1364	80	70	168	160	95	M64X3	83	78	40	45	37	M12X12
CF1380	80	70	168	160	95	M80X3	83	78	40	74	37	M12X12

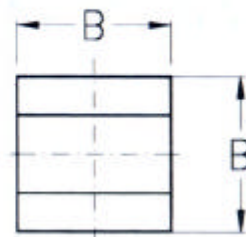
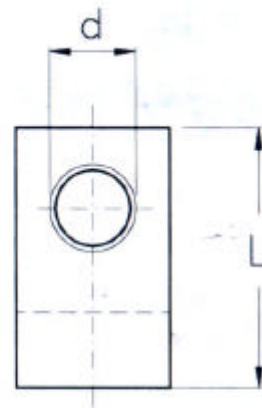
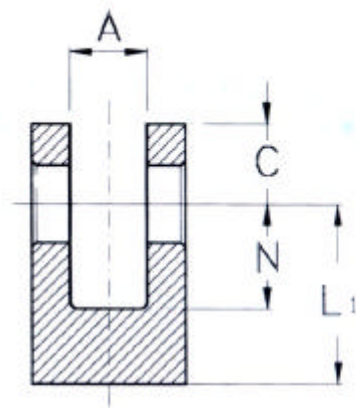
BULON REFERENCIA	d	L	d1	L1	a	b	Montaje en Horquilla
PCF1910	10	34	9,6	29	1,4	1,1	CF1310
PCF1911	12	43	11,5	37	1,9	1,1	CF1312
PCF1912	14	51	13,4	45	1,9	1,1	CF1314
PCF1913	20	73	19	66	2,2	1,3	CF1316
PCF1914	20	73	19	66	2,2	1,3	CF1320
PCF1915	28	95	26,6	87	2,4	1,6	CF1327
PCF1916	36	117	34	107	3,15	1,85	CF1333
PCF1917	45	139	42,5	129	3,15	1,88	CF1342
PCF1918	56	161	53	149	3,8	2,17	CF1348
PCF1919	70	181	67	169	3,35	2,65	CF1364
PCF1920	70	181	67	169	3,35	2,65	CF1380

HORQUILLA SOLDABLE

FS

WELDABLE YOKE

FS



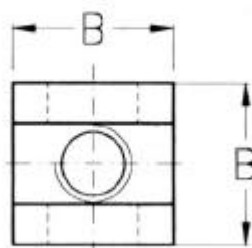
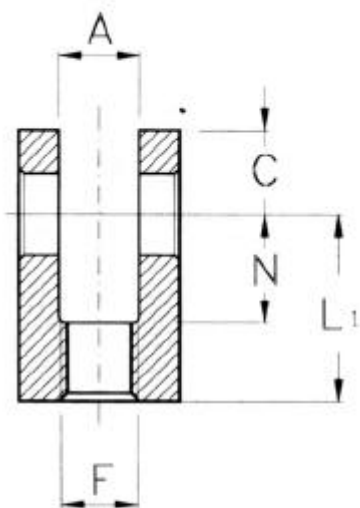
REFERENCIA	A	B	d	L	L1	N	C
FS1710	16	35	16,2	50	34	24	16
FS1712	20	40	20,25	60	40	30	20
FS1714	25	50	25,25	70	45	30	25
FS1716	30	60	30,25	80	50	35	30
FS1720	35	70	35,25	90	55	40	35

HORQUILLA ROSCADA

FF

THREADED YOKE

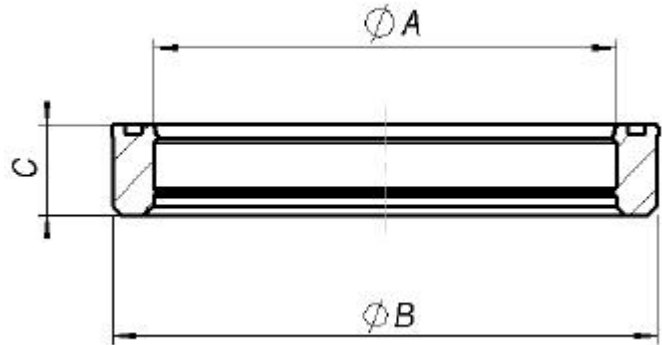
FF



REFERENCIA	D	A	B	d	L	L1	N	C
FF1700	M16X1,5	16	35	16,2	55	39	24	16
FF1702	M20X1,5	20	40	20,25	65	45	30	20
FF1704	M24X2	25	50	25,25	75	50	30	25
FF1706	M30X2	30	60	30,25	95	65	35	30
FF1708	M33X2	35	70	35,25	110	75	40	35

COLLARÍN

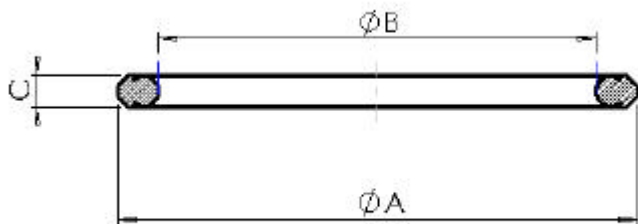
ROD-SEAL



REFERENCIA	A	B	C1/C2	kg/pieza	Montaje cil.
TS16224	16	22	4	0,0008	VARIOS
TS202858L	20	28	5,8	0,002	VARIOS / 700
TS223058L	22	30	5,8	0,002	VARIOS
TS253358L	25	33	5,8	0,0022	VARIOS / 701 / 625
TS283658L	28	36	5,8	0,0025	VARIOS
TS303858L	30	38	5,8	0,00225	VARIOS / 630 / 702 / 703
TS35436L	35	43	6	0,003	VARIOS / 635
TS364458L	36	44	5,8	0,003	VARIOS
TS405010L	40	50	10	0,0075	VARIOS / 640 / 704 / 705
TS455510L	45	55	10	0,0084	VARIOS / 645
TS506010L	50	60	10	0,009	VARIOS / 650 / 706
TS556512L	55	65	12	0,012	VARIOS / 655
TS5671115L	56	71	11,5	0,0175	VARIOS
TS6070115L	60	70	11,5	0,012	VARIOS / 660
RS7080L	70	80	12	0,0135	VARIOS / 670 / 707
RSS809512	80	95	12	0,025	VARIOS
TS90105115L	90	105	11,5	0,027	VARIOS
TS10011512L	100	115	12	0,03	VARIOS
TS110125113L	110	125	11,3		VARIOS

JUNTA de PISTÓN

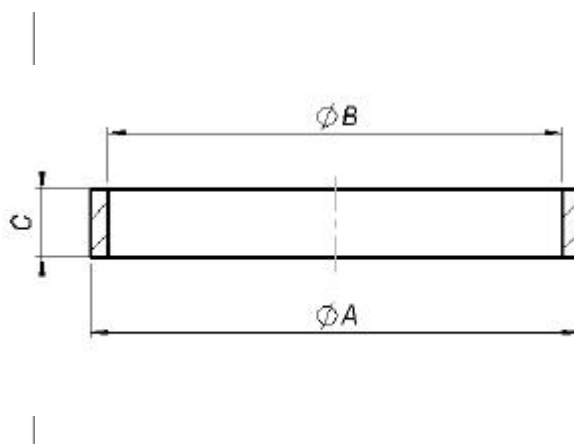
PISTON SEAL



REFERENCIA	A	B	C	kg/pieza	Montaje cil.
GPS40	40	29	4,2		VAROS / 701
GPS50	50	39	4,2		VARIOS / 702
GPS60	60	49	4,2		VARIOS / 703
GPS63	63	52	4,2		VARIOS
GPS70	70	59	4,2		VARIOS / 704
GPS80	80	64,5	6,3		VARIOS / 705
GPS90	90	74,5	6,3		VARIOS
GPS100	100	84,5	6,3		VARIOS / 706

GUÍA de PISTÓN

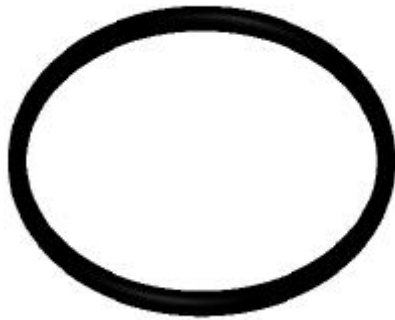
PISTON GUIDE



REFERENCIA	A	B	C	Kg / pieza	Montaje cil.
GE40356	40	35	6		VAROS / 701
GE504597	50	45	9,7		VARIOS / 702
GE605597	60	55	9,7		VARIOS / 703
GE635897	63	58	9,7		VARIOS
GE706597	70	65	9,7		VARIOS / 704
GE807597	80	75	9,7		VARIOS / 705
GE908597	90	85	9,7		VARIOS
GE1009597	100	95	9,7		VARIOS / 706

JUNTA TÓRICA

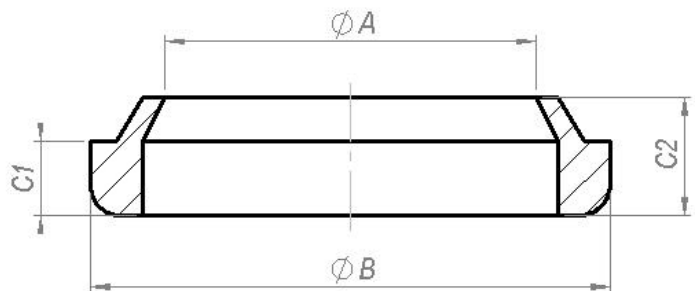
O-RING



REFERENCIA	A	B	Montaje cil.
2-113	13,94	2,62	VARIOS
2-114	15,54	2,62	VARIOS
5-598	24,6	3,6	FRENO
2-121	26,64	2,62	700 / VARIOS
2-124	31,42	2,62	625
2-221	36,09	3,53	701 / VARIOS
2-223	40,87	3,53	635
2-826	42,86	3,53	702 / VARIOS
2-224	44,04	3,53	640
2-227	53,57	3,53	703 / VARIOS
2-228	56,74	3,53	645
2-836	58,74	3,53	VARIOS
2-229	59,92	3,53	650
2-840	65,1	3,53	704 / VARIOS
2-231	66,27	3,53	655
2-233	72,62	3,53	660
2-234	75,79	3,53	705 / VARIOS
2-340	85,09	5,33	670
2-237	85,32	3,53	VARIOS
2-240	94,84	3,53	706 / VARIOS
2-348	110,49	5,33	707
2-349	113,67	5,33	VARIOS
2-354	129,54	5,33	VARIOS
2-360	148,59	5,33	VARIOS
2-442	182,52	6,99	VARIOS

RASCADOR

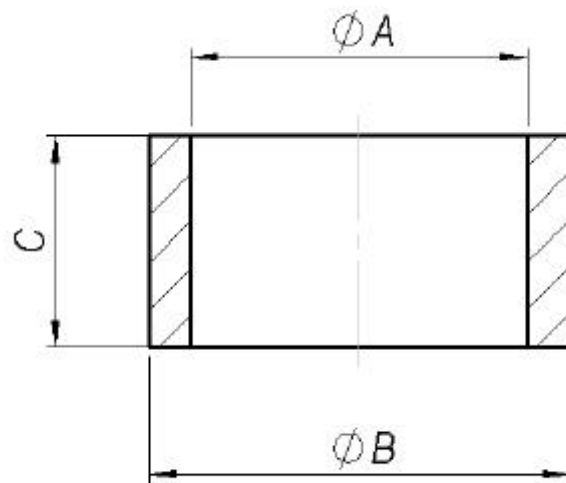
WIPER



REFERENCIA	A	B	C1/C2	kg/pieza	Montaje cil.
AMM071053	16	22	3/4	0,002	VARIOS
RGM0200280305	20	28	3,5/5	0,0035	VARIOS/700
RGM223257	22	32	5/7	0,0063	VARIOS
RGM098137	25	35	5/8	0,0075	VARIOS / 701 / 625
RGM283858	28	38	5/8	0,0075	VARIOS
AMM073010	30	40	5/8	0,009	VARIOS / 630 / 702 / 703
AMM073050	35	45	7/10	0,012	VARIOS / 635
AMM073054	36	45	7/10	0,015	VARIOS
AMM074005	40	50	7/10	0,0135	VARIOS / 640 / 704 / 705
AMM074050	45	55	7/10	0,0167	VARIOS / 645
AMM075006	50	60	7/10	0,0185	VARIOS / 650 / 706
AMM075048	55	65	7/10	0,018	VARIOS / 655
AMM075052	56	66	7/10	0,020	VARIOS
AMM076007	60	70	7/10	0,025	VARIOS / 660
AMM077008	70	80	7/10	0,024	VARIOS / 670 / 707
AMM078009	80	90	7/10	0,025	VARIOS
AMM079009	90	100	7/10	0,035	VARIOS
AMM079010	100	110	7/10	0,040	VARIOS
AMM079011	110	120	7/10	0,040	VAROS

JUNTA de PISTÓN - FRENO

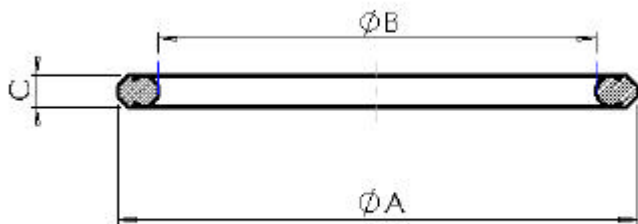
BRAKE- LOCKING PISTON SEAL



REFERENCIA	A	B	C	Kg / pieza	Montaje cil.
BF16	16	20	10		VAROS / 701
BF22	22	25	10		VARIOS / 702 / 703
BF27	27	30	12		VARIOS / 704 / 705
BF36	36	40	12		VARIOS / 706

JUNTA de PISTÓN

PISTON SEAL



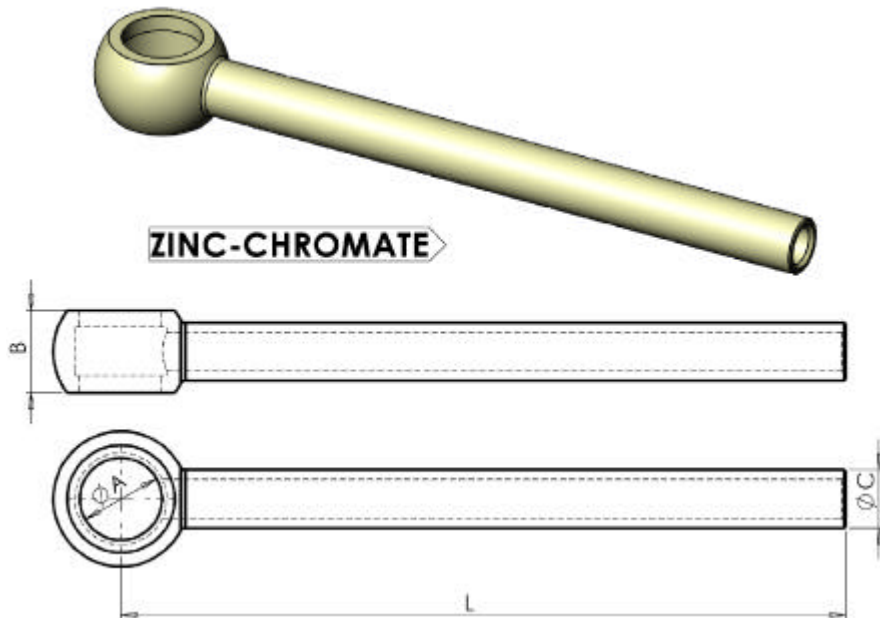
REFERENCIA	A	B	C	kg/pieza	Montaje cil.
GPS40	40	29	4,2		VAROS / 701
GPS50	50	39	4,2		VARIOS / 702
GPS60	60	49	4,2		VARIOS / 703
GPS63	63	52	4,2		VARIOS
GPS70	70	59	4,2		VARIOS / 704
GPS80	80	64,5	6,3		VARIOS / 705
GPS90	90	74,5	6,3		VARIOS
GPS100	100	84,5	6,3		VARIOS / 706

OJIVA CONDUCCIÓN

CONDUCTING BANJO

OJIVAS 1/4"G / BANJOS 1/4"G

REFERENCIA	A	B	ØC	L	Kg/pieza
4001E	1/4"G	14,5	12	38	0,038
4001E-100				100	0,053
4001E-150				150	0,078
4001E-200				200	0,103
4001E-250				250	0,128
4001E-300				300	0,152
4001E-400				400	0,193

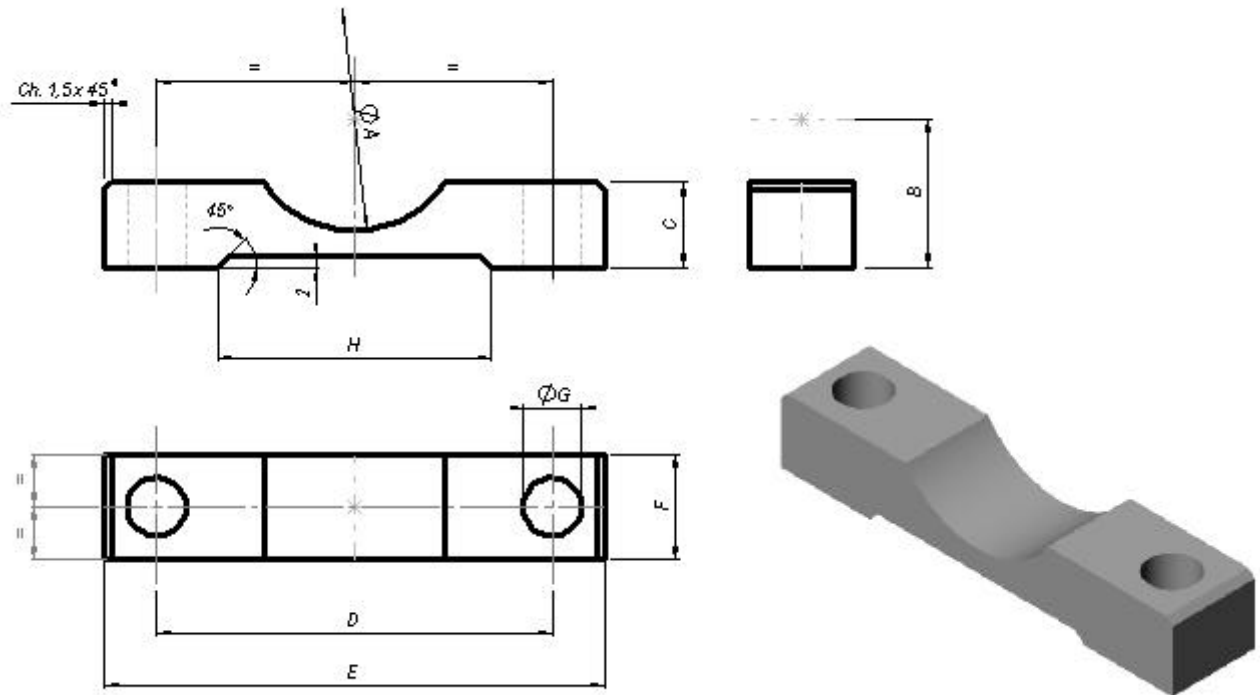


OJIVAS 3/8"G / BANJOS 3/8"G

REFERENCIA	A	B	ØC	L	Kg/pieza
4002E	3/8"G	17	12	40	0,050
4002E-100				100	0,065
4002E-150				150	0,090
4002E-200				200	0,115
4002E-250				250	0,140
4002E-300				300	0,165
4002E-400				400	0,205
4002E-500				500	0,250
4002E-600				600	0,305
4002E-700				700	0,325

PATA de APOYO

FOOT FASTENING



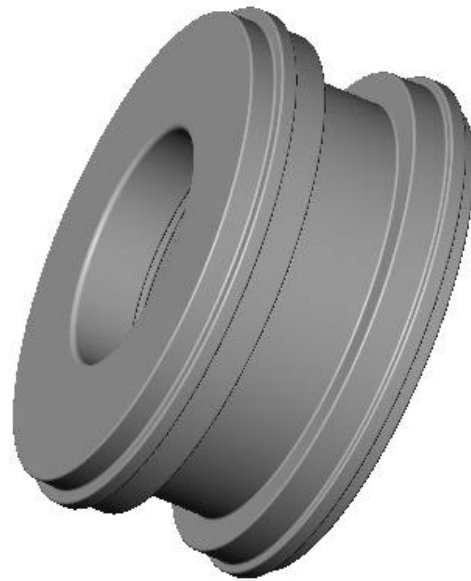
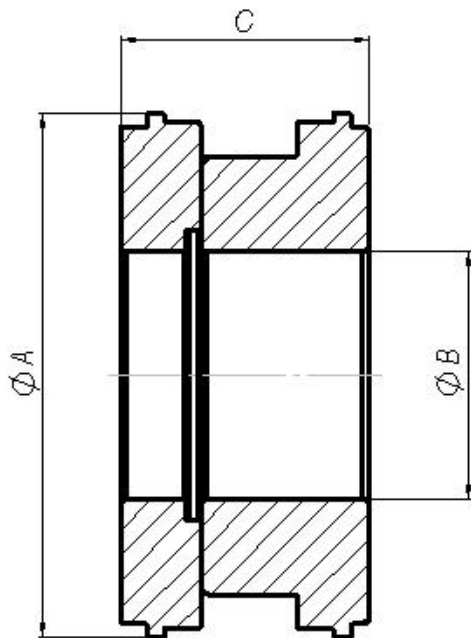
REFERENCIA	A	B	C	D	E	F	G	H	Kg/pieza	Montaje cil.
PT32	42	28	16	75	95	20	11	52	0.16	8500
PT40	50	35	20	94	118	25	13	60	0.34	8501 / 8503
PT50	60	40	20	105	130	25	15	70	0.37	8504 / 8507
PT60	70	50	25	130	160	30	17	80	0.72	8508 / 8510
PT63	75	50	25	130	160	30	17	85	0.68	8511 / 8513
PT70	80	55	25	140	170	30	18	90	0.76	8514 / 8516
PT80	95	62	30	160	195	40	19	105	1.37	8517 / 8521
PT100	115	73	30	185	225	40	23	125	1.56	8522 / 8526
PT125	145	88	35	220	265	45	25	155	2.38	8527 / 8528
PT140	160	100	40	250	300	50	30	170	3.54	8529
PT160	180	115	40	295	355	60	35	180	5.46	8530 / 8531
PT200	230	140	50	355	425	70	41	240	8.99	8532

PISTÓN de DOBLE EFECTO

DOS PIEZAS

DOUBLE ACTING PISTON

TWO-PIECE



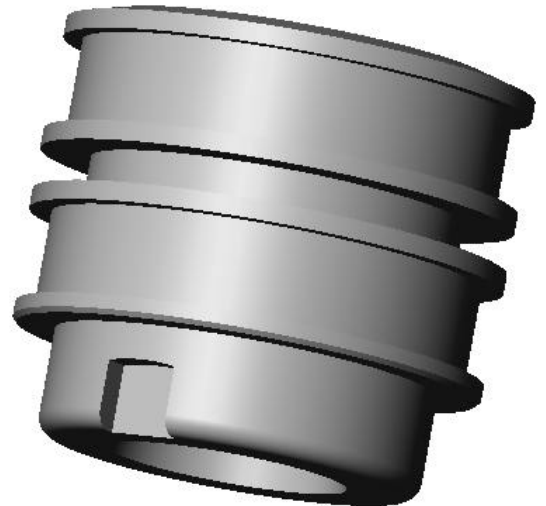
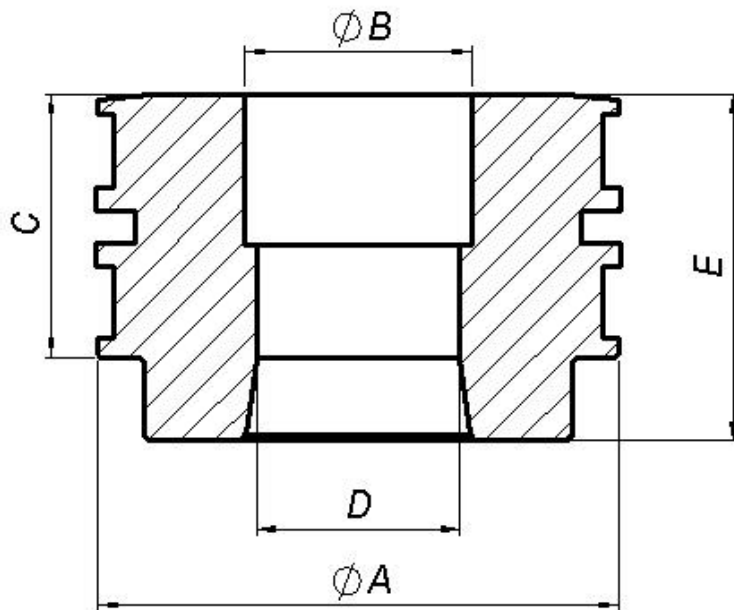
REFERENCIA	A	B	C	kg/pieza
P3214CI	32	14	40	0,15
P322P	32	14	40	0,15
P4016	40	16	36	0,19
P11040	110	40	55	2,62
P12060	120	60	55	2,54
P12560	125	60	55	2,83
P13060	130	60	55	3,30
P14065	140	65	65	4,62
P16075	160	75	65	6,10
P18075	180	75	70	9,31
P20000	200	80	80	13,77
P250100	250	100	90	27,70

PISTÓN de DOBLE EFECTO

UNA PIEZA

DOUBLE ACTING PISTON

ONE-PIECE



REFERENCIA	A	B	C	D	E	kg/pieza
P4020CI	40	20	31	M16x2	41	0,21
P5020CI	50	20	33	M16x2	44	0,41
P5025CI	50	25	33	M22x2	44	0,37
P6020CI	60	20	33	M16x2	44	0,56
P6025CI	60	25	33	M22x2	44	0,52
P6325CI	63	25	33	M22x2	44	0,64
P7030CI	70	30	35	M27x2	46	0,77
P8030CI	80	30	42	M27x2	53	1,3
P9030CI	90	30	45	M27x2	56	1,89
P9040CI	90	40	45	M36x2	56	1,79
P10040CI	100	40	45	M36x2	57	2,1

RACOR de ALIMENTACIÓN

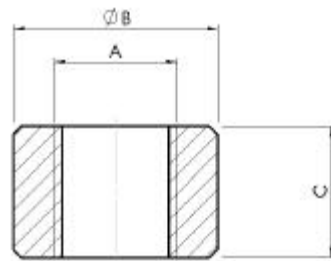
HEMBRA

OIL-PORT

FEMALE

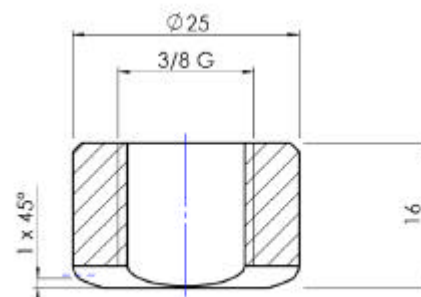
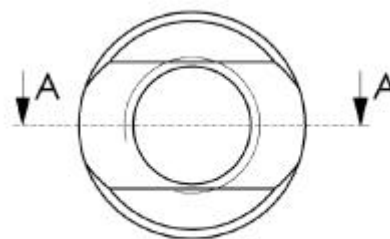
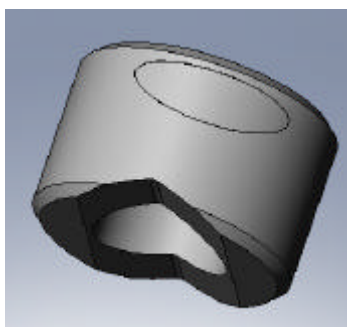
MANGUITOS HEMBRA / FEMALE OIL-PORTS

REFERENCIA	A	B	C	Kg/pieza
4131CL	1/4"G	19,1	13	0,015
4132-CL	3/8"G	24,09	19	0,035
4133CL	1/2"G	29,06	20	0,06



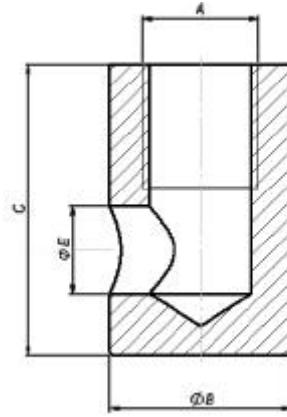
MANGUITOS HEMBRA (ESTAMPADO EN FRÍO) FEMALE OIL-PORTS (COOL DROP-FORGING)

REFERENCIA	A	B	C	Kg/pieza
4132-C	3/8"G	25	16	0,03



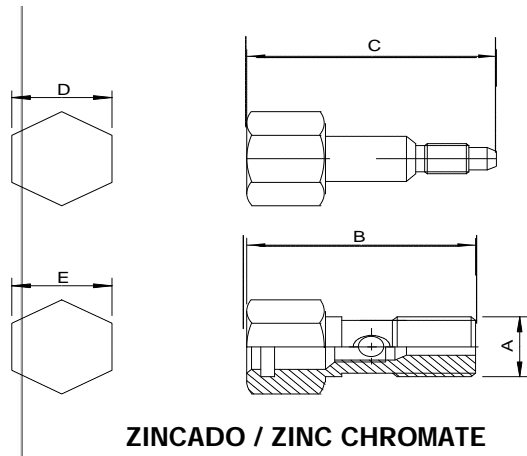
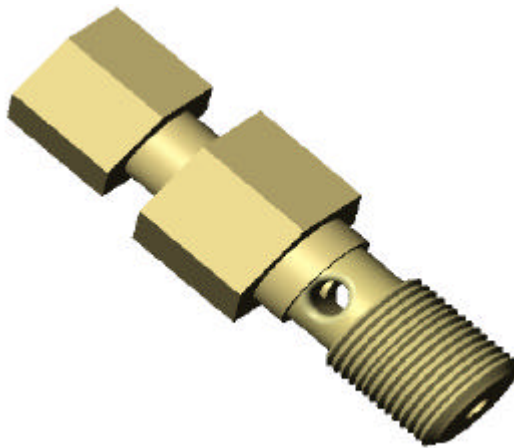
RACOR de ALIMENTACIÓN

OIL-PORT



TOMA CONEXIÓN HEMBRA / FEMALE FITTING

REFERENCIA	A	B	C	D	E	Kg/pieza	Montaje cil.
TCH14	1/4"G	22	40	19	12,25	0,09	VARIOS
TCH38L	3/8"G	25	50	25	12,25	0,135	701 / 705
TCH12	1/2"G	30	40	15	12,25	0,135	700
TCH12L	1/2	30	50	25	12,25	0,138	VARIOS



ZINCADO / ZINC CHROMATE

TORNILLO REGULADOR / FLOW CONTROL SCREW

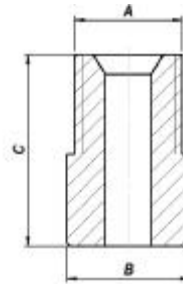
REFERENCIA	A	B	C	D	E	Kg/pieza	Montaje cil.
4013E	1/4"G	45	38	19	19	0,070	VARIOS
4022E	3/8"G	51	54	19	22	0,135	VARIOS

RACOR de ALIMENTACIÓN

MACHO

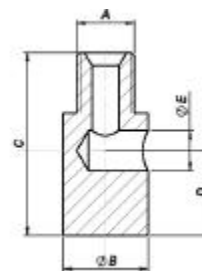
OIL-PORT

MALE



MANGUITOS MACHO / MALE OIL-PORTS

REFERENCIA	A	B	C	Kg/pieza	Montaje cil.
4121	1/4"G	16	25	0,020	VARIOS
4121L	1/4"G	19,1	28	0,040	
4122	3/8"G	16	25	0,030	VARIOS
4122L	3/8"G	24,09	28,5	0,045	
4123	1/2"G	21	29	0,050	VARIOS

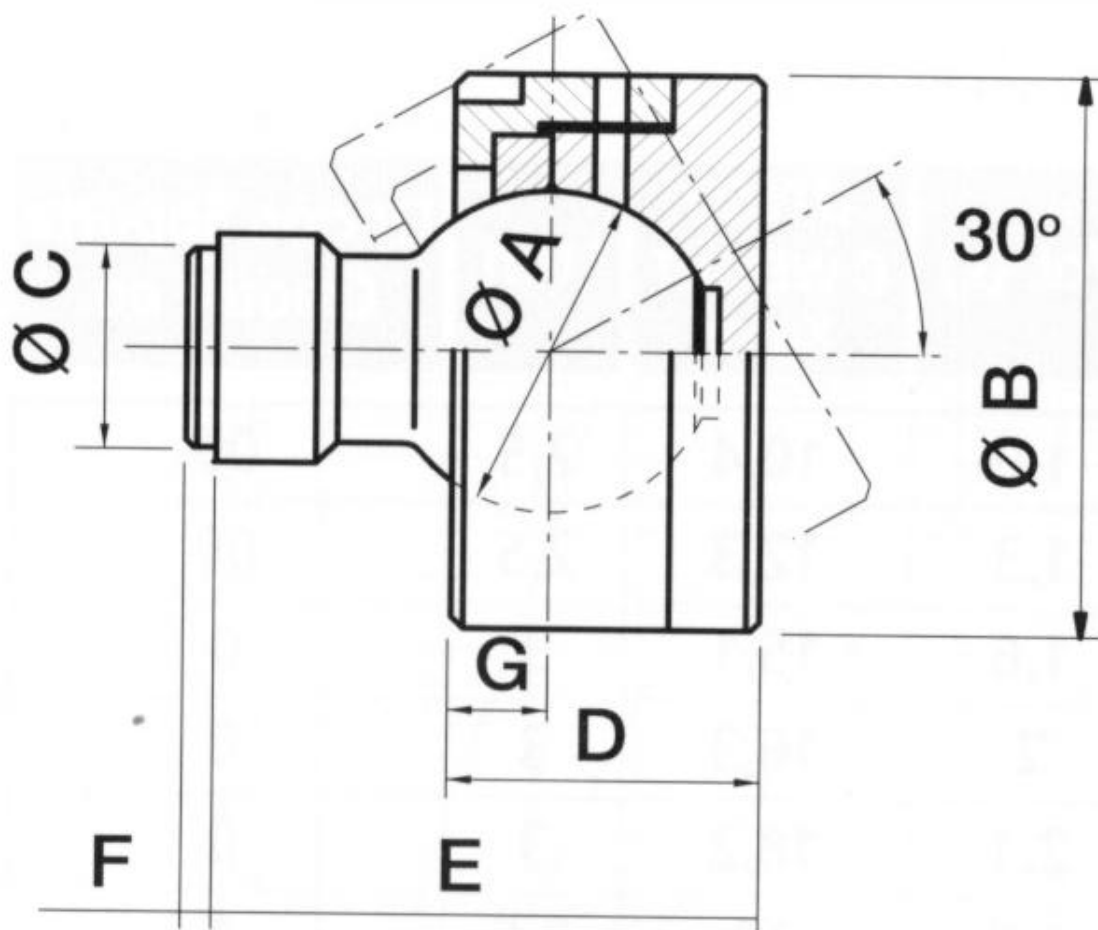


TOMA CONEXIÓN MACHO / MALE FITTING

REFERENCIA	A	B	C	D	E	Kg/pieza	Montaje cil.
TCM38L	3/8"G	25	54	25	12,25	0,14	VARIOS
TCM12	1/2"G	30	42	13	12,25	0,135	701/705

ROTULA de APOYO

SUPPORTING SPHERICAL CAB



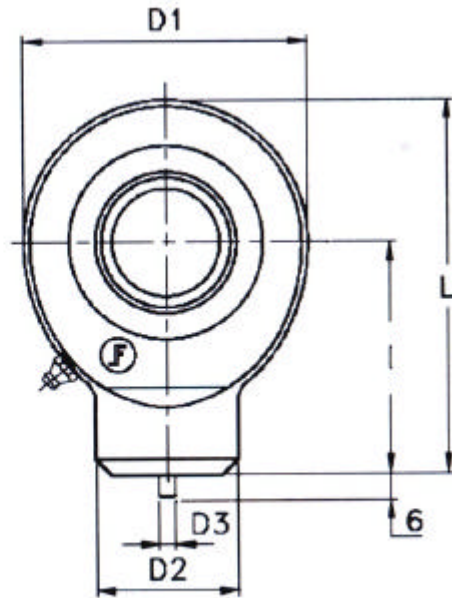
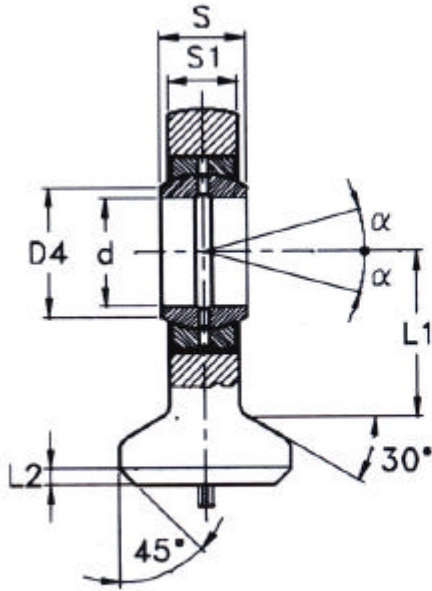
REFERENCIA	A	B	C	D	E	F	G	Ton	Kg / pieza
123R	44	75	24	45	69	5	14	8	1,5
124R	55	95	34	52	91	5	16	14	3
125R	66	115	34	59	89	5	19	22	4
126R	79	135	71	74	109	50	22	32	7

ROTULA

TAC

BALL-JOINT END

TAC



TAC . . .

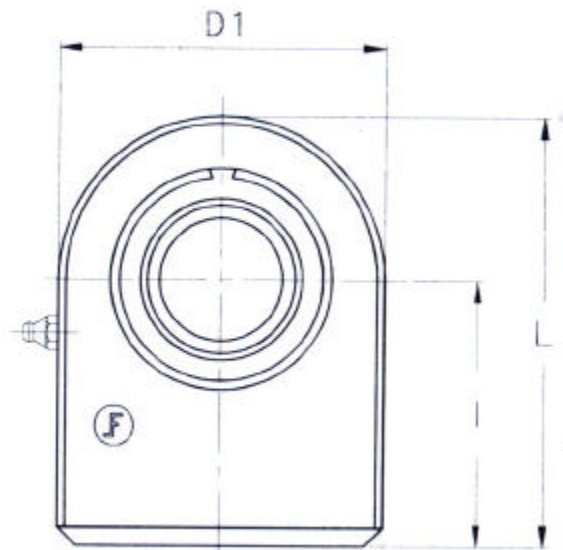
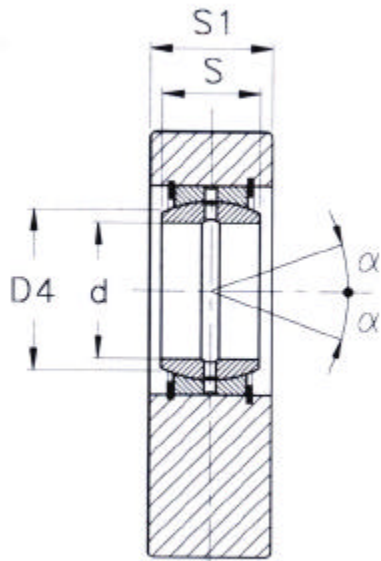
REF.	d	S	D4	I	D2	D1	S1	L	L1	L2	D3	Coef. Carga DIN (KN) EST		Grad	kg/pza.
GK 10 DO	10	9	13,2	24	15	29	7	38,5	15	2	3	8,15	15,6	12	0,040
GK 12 DO	12	10	15	27	17,5	34	8	44	18	2	3	10,8	21,6	11	0,065
GK 15 DO	15	12	18,4	31	21	40	10	51	20	2,5	4	17	32	8	0,120
GK 16 DO	16	14	20,7	35	24	46	11	58	23	3	4	19	36	9	0,175
GK 17 DO	17	14	20,7	35	24	46	11	58	23	3	4	21,2	40	10	0,180
GK 20 DO	20	16	24,1	38	27,5	53	13	64,5	27,5	3	4	30	54	9	0,250
GK 25 DO	25	20	29,3	45	33,5	64	17	77	33	4	4	48	72	7	0,450
GK 30 DO	30	22	34,2	51	40	73	19	87,5	37,5	4	4	62	95	6	0,670
GK 35 DO	35	25	39,7	61	47	82	21	102	43	4	4	80	125	6	0,980
GK 40 DO	40	28	45	69	52	92	23	115	48	5	4	100	156	7	1,35
GK 45 DO	45	32	50,7	77	58	102	27	128	52	5	6	127	208	7	1,93
GK 50 DO	50	35	56	88	62	112	30	144	59	6	6	156	250	6	2,65
GK 60 DO	60	44	66,8	100	70	135	38	167,5	72,5	8	6	245	390	6	4,6
GK 70 DO	70	49	77,8	115	80	160	42	195	86	10	6	315	510	6	7
GK 80 DO	80	55	89,4	141	95	180	47	231	98	10	6	400	620	6	10,8

RÓTULA SOLDABLE

TPN

WELDABLE BALL-JOINT END

TPN



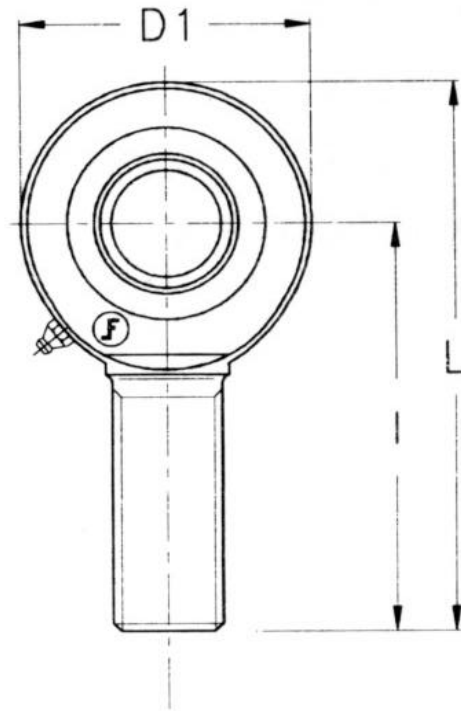
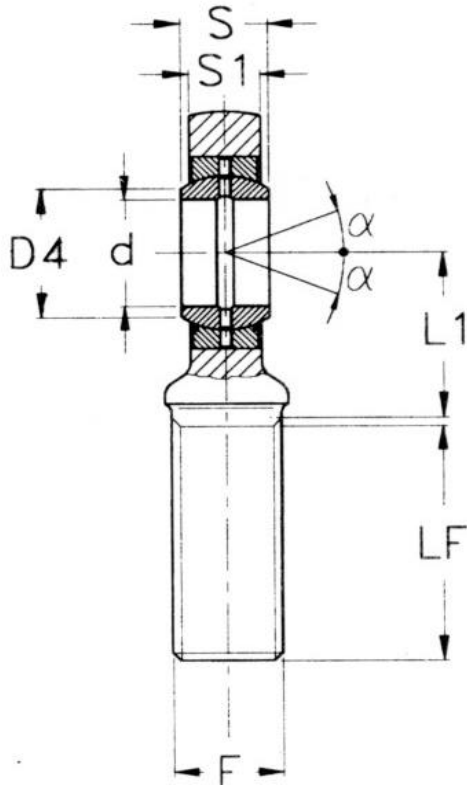
REFERENCIA	d	S	D4	I	D1	S1	L	Coef. Carga DIN (kN) EST		Grad	kg/pieza
GF 20 DO	20	16	24,1	38	50	19	63	30	67	9	0,350
GF 25 DO	25	20	29,3	45	55	23	72,5	48	69,5	7	0,530
GF 30 DO	30	22	34,2	51	65	28	83,5	62	118	6	0,850
GF 35 DO	35	25	39,7	61	83	30	102,5	80	196	6	1,5
GF 40 DO	40	28	45	69	100	35	119	100	300	7	2,48
GF 45 DO	45	32	50,7	77	110	40	132	127	380	7	3,45
GF 50 DO	50	35	56	88	123	40	149,5	156	440	6	4,45
GF 60 DO	60	44	66,8	100	140	50	170	245	570	6	7,1
GF 70 DO	70	49	77,8	115	164	55	197	315	695	6	10,7
GF 80 DO	80	55	89,4	141	180	60	231	400	780	6	15,1
GF 90 DO	90	60	98,1	150	226	65	263	490	1340	5	23,4
GF 100 DO	100	70	109,5	170	250	70	295	610	1500	7	33,1
GF 110 DO	110	70	121,2	185	295	80	332,5	655	2160	6	48,5
GF 120 DO	120	85	135,5	210	360	90	390	950	3250	6	79,5

ROTULA ROSCADA

TFE_DO

THEADED BALL-JOINT END

TFE_DO



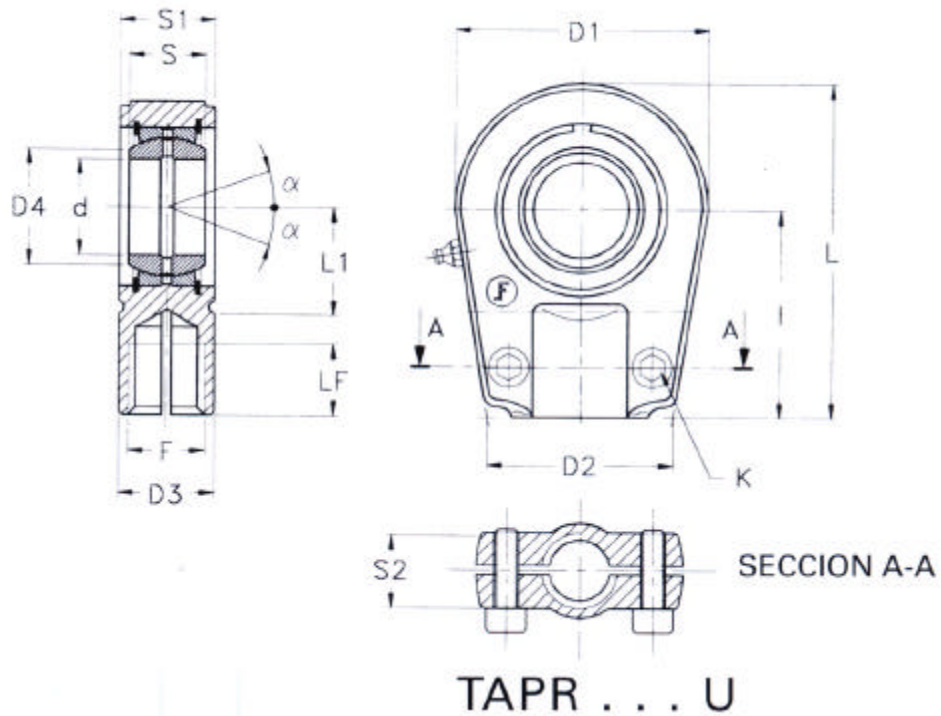
REFERENCIA	d	S	D4	I	D1	S1	L	L1	LF	F	Coef. Carga DIN (KN) EST	Grad	Kg/pza.
SA6E	6	6	10	36	21	4,4	46,5	12	16	M6X1	3,4 8,15	13	0,017
SA8E	8	8	13	42	24	6	54	14	21	M8X1,25	5,5 12,9	15	0,029
SA10E	10	9	16	48	29	7	62,5	15	27	M10X1,5	8,15 17,6	12	0,051
SA12E	12	10	18	54	34	8	71	18	28	M12X1,75	10,8 24,5	11	0,086
SA15ES	15	12	22	63	40	10	83	20	34	M14X2	17 36	8	0,140
SA17ES	17	14	25	69	46	11	92	23	36	M16X2	21,2 45	10	0,190
SA20ES	20	16	29	78	53	13	104,5	27	43	M20X1,5	30 60	9	0,310
SA25ES	25	20	35,5	94	64	17	126	32	53	M24X2	48 83	7	0,560
SA30ES	30	22	40,7	110	73	19	146,5	37	65	M30X2	62 110	6	0,890
SA35ES	35	25	47	140	82	21	181	42	82	M36X3	80 146	6	1,40
SA40ES	40	28	53	150	92	23	196	48	86	M39X3	100 180	7	1,80
SA45ES	45	32	60	163	102	27	214	52	94	M42X3	127 240	7	2,60
SA50ES	50	35	66	185	112	30	241	60	107	M45X3	156 290	6	3,40
SA60ES	60	44	80	210	135	38	277,5	75	115	M52X3	245 450	6	5,90
SA70ES	70	49	92	235	160	42	315	87	125	M56X4	315 610	6	8,20
SA80ES	80	55	105	270	180	47	360	100	140	M64X4	400 750	6	12,00

ROTULA ROSCADA

TAPR_U

THEADED BALL-JOINT END

TAPR_U



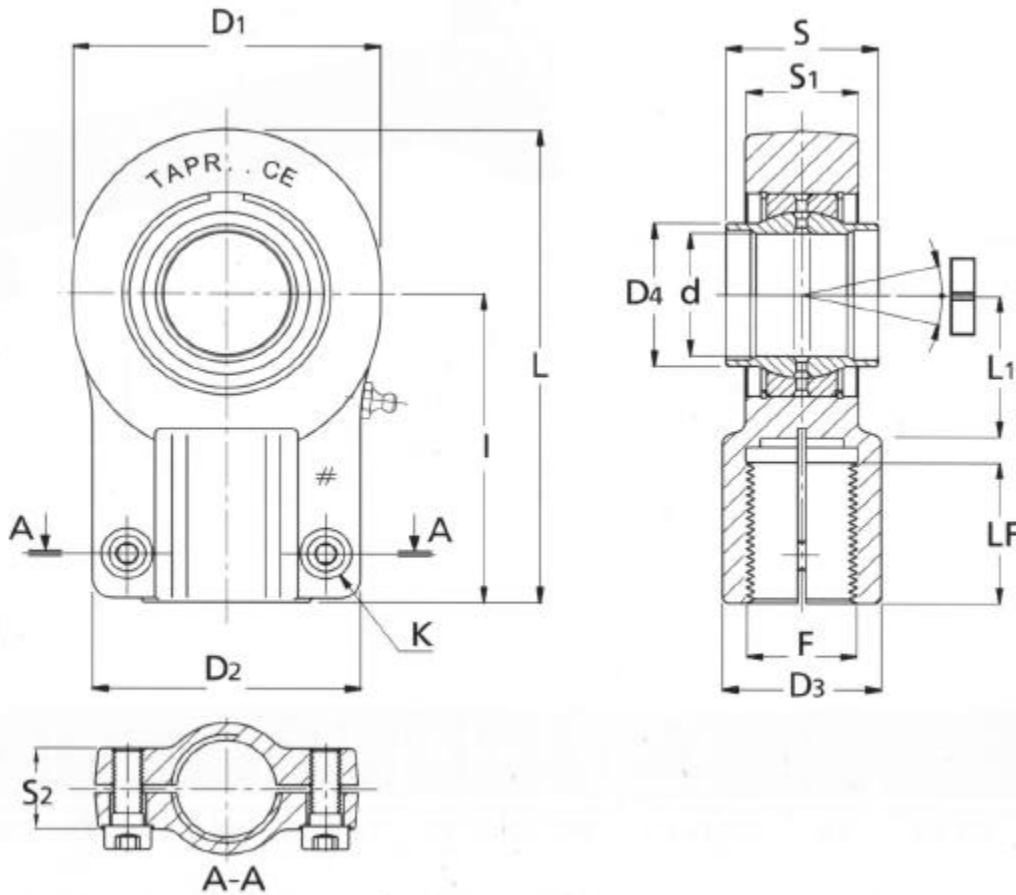
REFERENCIA	d	S	D4	I	D1	D2	S1	L	L1	D3	LF	F	Coef. Carga DIN (KN) EST	Grad	kg/pza
GIHR-K 20 DO	20	16	24,1	50	56	41	19	78	25	25	17	M16x1,5	30 72	9	0,43
GIHR-K25 DO	25	20	29,3	50	56	41	23	78	25	25	17	M16x1,5	48 72	7	0,48
GIHR-K30 DO	30	22	34,2	60	64	46	28	92	30	32	23	M22x1,5	62 106	6	0,74
GIHR-.K35 DO	35	25	39,7	70	78	58	30	109	38	40	29	M28x1,5	80 153	6	1,20
GIHR-K 40 DO	40	28	45	85	94	66	35	132	45	49	36	M35x1,5	100 250	7	2,00
GIHR-K 50 DO	50	35	55,9	105	116	88	40	163	55	61	46	M45x1,5	156 365	6	3,80
GIHR-K 60 DO	60	44	66,8	130	130	90	50	200	65	75	59	M58x1,5	245 400	6	5,40
GIHR-K 70 DO	70	49	77,8	150	154	100	55	232	75	86	66	M65x1,5	315 540	6	8,50
GIHR-K 80 DO	80	55	89,4	170	176	125	60	265	80	102	81	M80x2	400 670	6	12,00
GIHR-K 90 DO	90	60	98	210	206	146	65	322	90	124	101	M100x2	490 980	5	21,50
GIHR-K 95 DO	100	70	109,5	235	230	156	70	360	105	138	111	M110x2	610 1120	7	27,5
GIHR-K 96 DO	110	70	121,2	265	265	190	80	407	115	152	125	M120x3	655 1700	6	40,5
GIHR-K97 DO	120	85	135,5	310	340	217	90	490	140	172	135	M130x3	950 2900	8	76

ROTULA ROSCADA

TAPR_CE

THEADED BALL-JOINT END

TAPR_CE



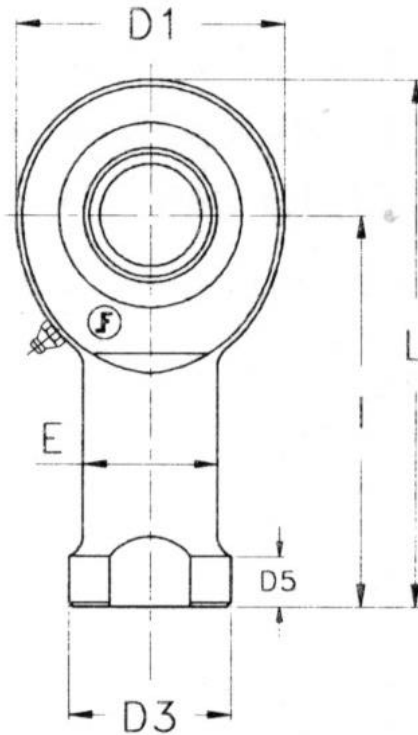
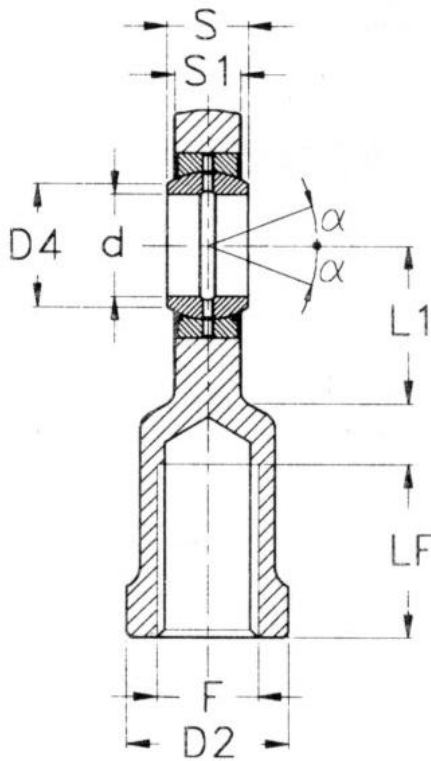
REFERENCIA	d	S	D4	I	D1	D2	S1	S2	L	L1	D3	LF	F	Coef. Carga DIN (KN)	EST	Grad	kg/pza
SIQG 12 ES	12	12	15,5	38	32	32	11	15	54	14	16	17	M12X1,25	10,8	24,5	4	0,11
SIQG 16 ES	16	16	20	44	40	40	13	15	64	20	21	19	M14X1,5	17,6	36,5	4	0,20
SIQG 20 ES	20	20	25	52	47	47	17	19	75	22	25	23	M16X1,5	30	48	4	0,35
SIQG 25 ES	25	25	30,5	65	58	58	22	19	96	27	30	29	M20X1,5	48	78	4	0,62
SIQG 32 ES	32	32	38	80	71	66	28	22	118	32	38	37	M27X2	67	114	4	1,15
SIQG 40 ES	40	40	46	97	90	80	33	26	146	41	47	46	M33X2	100	204	4	2,18
SIQG 50 ES	50	50	57	120	109	96	41	32	179	50	58	57	M42X2	156	310	4	3,96
SIQG 63 ES	63	63	71,5	140	136	114	53	38	211	62	70	64	M48X2	255	430	4	6,80
SIQG 70 ES	70	70	79	160	155	135	57	42	245	70	80	76	M56X2	315	540	4	9,60
SIQG 80 ES	80	80	91	180	170	148	67	48	270	78	90	86	M64X3	400	695	4	13,00
SIQG 90 ES	90	90	99	195	185	160	72	52	296	85	100	91	M72X3	490	750	4	19,10
SIQG 100 ES	100	100	113	210	211	178	85	62	322	98	110	96	M80X3	610	1060	4	25,00
SIQG 110 ES	110	110	124	235	235	190	88	62	364	105	125	106	M90X3	655	1200	4	32,00
SIQG 125 ES	125	125	138	260	265	200	103	72	405	120	135	113	M100X3	950	1430	4	46,00

ROTULA ROSCADA

TFI_DO

THEADED BALL-JOINT END

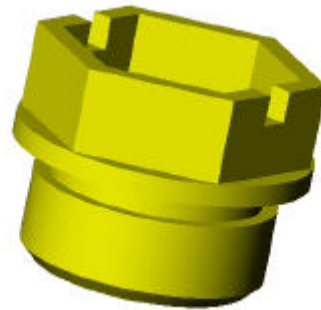
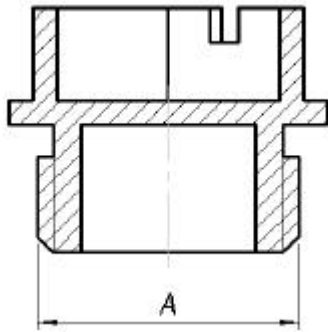
TFI_DO



REFERENCIA	d	S	D4	I	D1	D3	E	D2	D5	S1	L	L1	LF	F	Coef. Carga DIN (KN) EST	Grad	Kg/ pza
SI6E	6	6	8	30	21	13	10	11	5	4,4	40,5	12	11	M6X1	3,4 8,1	13	0,020
SI8E	8	8	10,2	36	24	16	12,5	14	5	6	48	14	15	M8X1,25	5,5 12,9	15	0,04
SI10E	10	9	13,2	43	29	19	15	17	6,5	7	57,5	15	15	M10X1,5	8,1 17,6	12	0,06
SI12E	12	10	15	50	34	22	17,5	19	6,5	8	67	18	18	M12X1,75	10,8 24,5	11	0,10
SI15ES	15	12	18,4	61	40	26	21	22	8	10	81	20	21	M14X2	17 36	8	0,18
SI17ES	17	14	20,7	67	46	30	24	27	10	11	90	23	24	M16X2	21,2 45	10	0,22
SI20ES	20	16	24,1	77	53	35	27,5	32	10	13	103,5	27	30	M20X1,5	30 60	9	0,35
SI25ES	25	20	29,3	94	64	42	33,5	36	12	17	126	32	36	M24X2	48 83	7	0,64
SI30ES	30	22	34,2	110	73	50	40	41	15	19	146,5	37	45	M30X2	62 110	6	0,93
SI35ES	35	25	39,7	125	82	58	47	50	15	21	166	42	60	M36X3	80 146	6	1,300
SI40ES	40	28	45	142	92	65	56	55	18	23	188	48	65	M39X3	100 180	7	2,000
SI45ES	45	32	50,7	145	102	70	62	60	20	27	196	52	65	M42X3	127 240	7	2,500
SI50ES	50	35	56	160	112	75	68	65	20	30	216	60	68	M45X3	156 290	6	3,500
SI60ES	60	44	66,8	175	135	88	78	75	20	38	242,5	75	70	M52X3	245 450	6	5,500
SI70ES	70	49	77,8	200	160	98	85	85	20	42	280	87	80	M56X4	315 610	6	8,600
SI80ES	80	55	89,4	230	180	110	102	100	25	47	320	100	85	M64X4	400 750	6	12,000

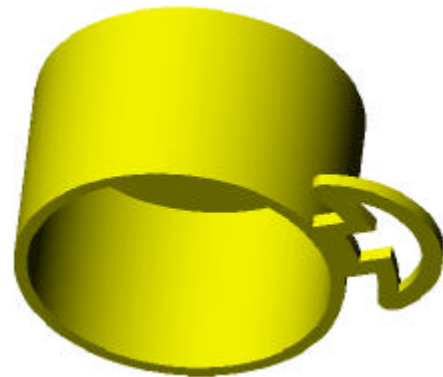
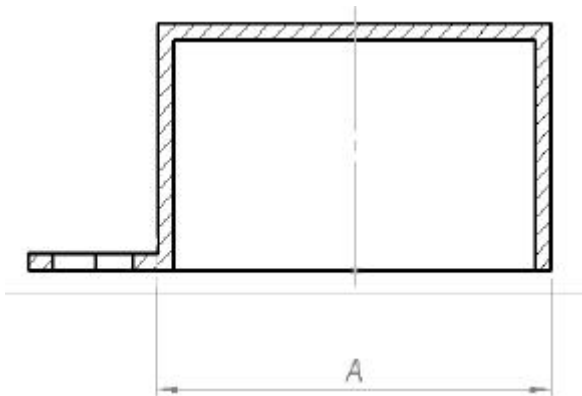
TAPÓN

CAP



TAPONES DE RACORES HEMBRA / CAPS FOR FEMALE OILPORTS

REFERENCIA	A	Montaje cil.
TPH14	1/4"G	VARIOS
TPH38	3/8"G	VARIOS
TPH12	1/2"G	VARIOS
TPH34	3/4"G	VARIOS
TPH1	1"G	VARIOS
TPH16	M16x1,5	VARIOS



TAPONES DE RACORES MACHO / CAPS FOR MALE OILPORTS

REFERENCIA	A	Montaje cil.
TPM14	1/4"G	VARIOS
TPM38	3/8"G	VARIOS
TPM12	1/2"G	VARIOS
TPM34	3/4"G	VARIOS